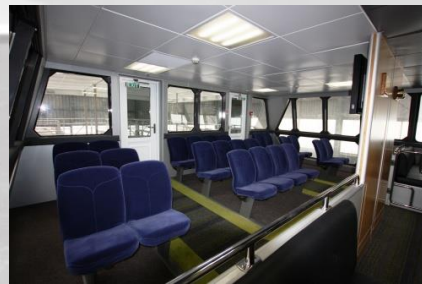
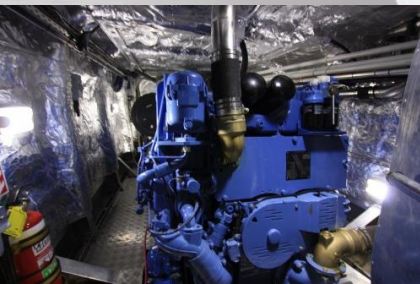


Q-west.com
BOAT BUILDERS - NEW ZEALAND
EXCELLENCE IN ALLOY



TITIROA

EXCELLENCE IN ALLOY



realJOURNEYS

TITIROA

December 2011

LOA

23.90m

Beam

7.50m

Draft

2.40m

Fuel Capacity

2x 3000 litres

Engines

2x MTU 2000 M70

Propulsion

Five blade propeller

Cruise Speed

25 knots